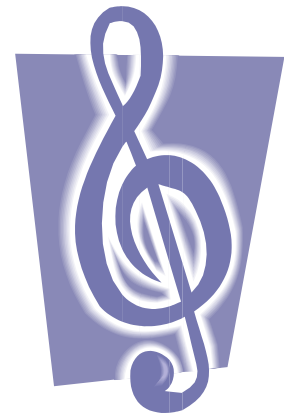


2011

Valley Singing Schedule



January	16	Fresno
February	20	Tulare
March	20	Bakersfield
April	17	Delano
May	15	Fresno
June	19	Bakersfield
July	31	Tulare
August	21	Delano
September	18	Fresno
October	16	Tulare
November	20	Bakersfield
December	—	Merry Christmas



When hosting the singing please remember that there are others driving from their home congregations. Please start lunch between 12:30 and 1:00 to give your guests time to arrive (and eat). The singing usually starts between 2:00 and 2:30. If you need to change the date of your singing please contact the other congregations.

In Christ,

Steve Cole
(559) 786-5736
coleminers@yahoo.com